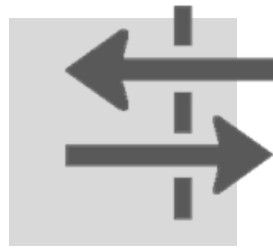




# ALB-ARCHITECT

Creative by nature. Efficient by design.





BUILDING

ENVIRONMENT & ENERGY

TRANSPORT



## ABOUT US



**ALB Architect** is an international firm, operating actively since 2008 in Kosovo, carrying out efficient design, construction, project management and consulting specialized in shaping your ideas into innovative and long lasting solutions. We continue to learn from our experience and creatively embrace upcoming challenges by cooperating social and environmental sustainability throughout our vision of the future.

**Our Goal** is to deliver exceptional buildings that provide real quality of life and measurable long-term investment worth, in response to our client's needs and requirements.

# COMPANY BOARD

**ALB-Architect** is a large team of engineers, architects and creative people who address some of the most challenging structural, technological, planning, and development strategies in Kosovo and abroad. The four leaders of this company focus on increasing the company's lines, by managing and achieving goals, taking fast and decisive action when required, outperforming the bottom competition and always inspiring others to accomplish their highest level. By empowering each employee, the **leading board** sets a great example on how to successfully guide a complex team structure.



**Bekim Dobraj** *Dipl.HVAC.Eng.*  
Partner & Member of the Board of  
Directors

**Afrim Demiri** *Dipl.Civ.Eng.*  
Partner & Chairman of the Board  
of Directors

**Alush Shala** *Dipl.Civ.Eng.*  
Partner & Member of the Board of  
Directors

**Ali Palushi** *Dipl.Civ.Eng.*  
Partner & Member of the Board of  
Directors



- Afrim Demiri, Chief Executive Officer



## OUR TEAM

To be successful, we provide opportunities and encouragement to help our people reach their potential. We work with our clients as a team. Mutual respect provides the foundation for our success. We remain true to our founding values of quality, honesty, and hard work. We have the highest ethical standards in the industry.

ALB-Architect is a business based on the trust we are consistently associated with the high standards of service, quality, personal attention to clients, and integrity. We are proactive in finding solutions for our clients that best achieve their goals. We understand that lasting relationships are the lifeblood of our business so we pay personal attention to our clients by focusing on them as individuals.

***"Our diverse and inclusive workforce positions the company to grow enhance our presence in diverse markets and helps us build enduring relationships with each other, industry partners and our clients."***

*- Leading Board*

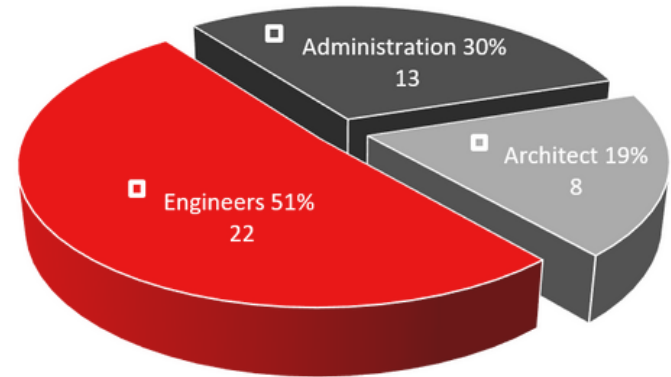
With a staff of over **40 employees**, the company develops construction on **25 projects** each year with around **1.66 mil eur** turnover. Our project teams have experienced improvements in design team and trade contractor relationships, communication, scope definition, coordination, cost, and schedule performance.

# EMPLOYEE STRUCTURE

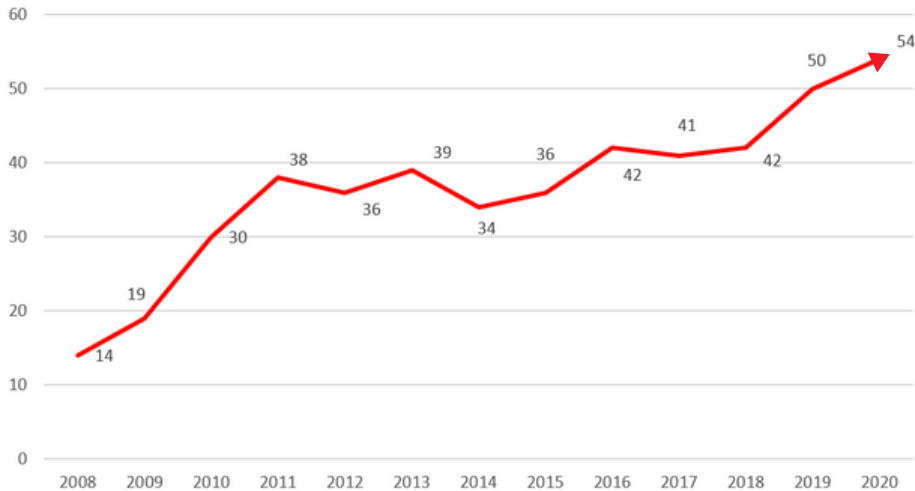
Having an organizational structure in place allows companies to remain efficient and focused.

**"OUR EMPLOYEES ARE OUR ASSET!"**

- Chief Executive Officer



Employee Growth



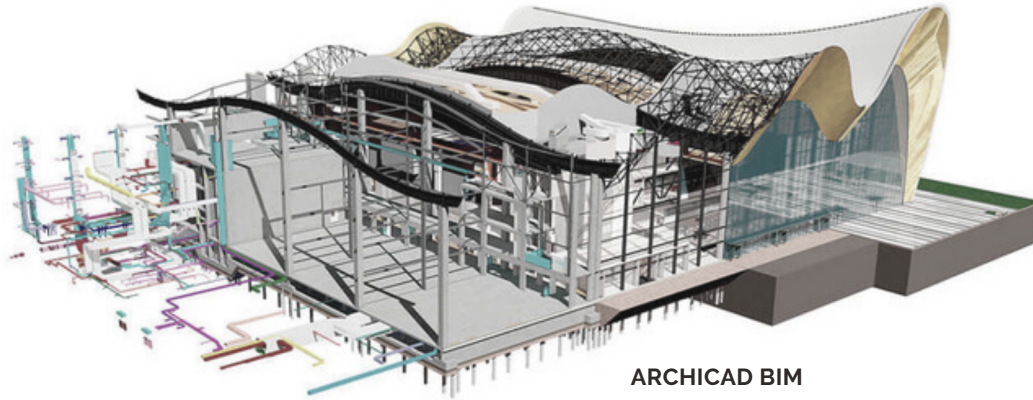
Employee composition



# DESIGN REVOLUTION 4.0

## BIM & GIS

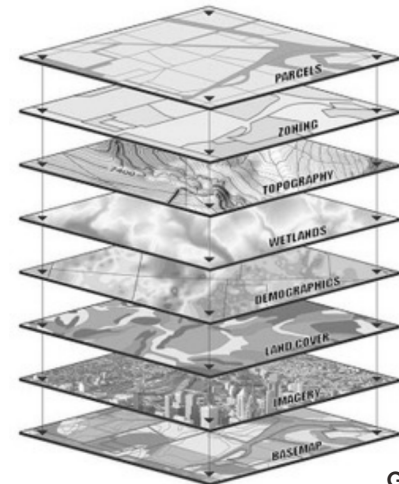
Our contemporary strength is the capacity to bring various engineering approaches and projects into dialogue, blending them into a multidisciplinary paradigm that underpins DESIGN 4.0 today. Combining these aspects, we aim to design technical proposals for each engineering discipline in one final solution.



ARCHICAD BIM

We believe that the diverse perspectives of our disciplines will guide us into the future of design, so we pursue this with determination from the start by carrying out 4.0 projects utilizing modern IT methods such as BIM, integrating process with end-to-end data access.

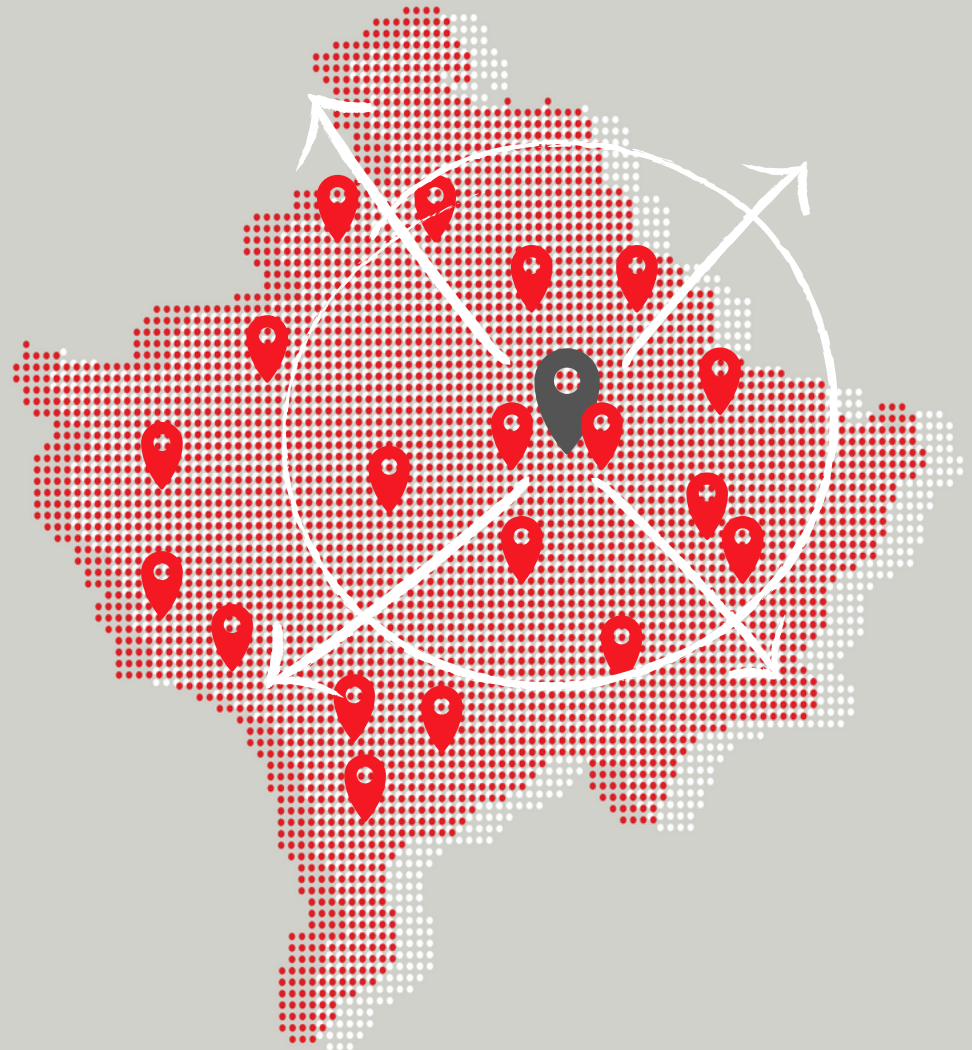
**Alb-Architect** is one of the leading companies which started implementing the BIM system of ARCHICAD in Kosovo, improving the management process and overall cost efficiency. In interaction with the GIS geodata collection, data analysis, digital terrain models as well as satellite image data in real time, Alb-Architect guarantees up to date solutions to its client's needs and requests.



GIS

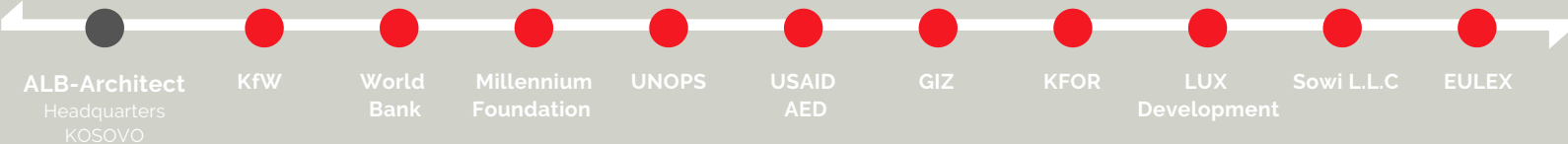
# LOCAL IMPACT

- ALB-Architect  
Headquarters/Prishtina
  - Ministry of Public Administration
  - Ministry of Education, Science and Technology
  - Ministry of Environment and Spatial Planning
  - Ministry of Labour and Social Welfare
  - Ministry of Health
  - Ministry of Trade and Industry
  - Assembly of Kosovo
  - University of Prishtina
  - Municipality of Junik
  - Municipality of Suhareka
  - Regional Water Company – Hidroregjioni Jugor  
Prizren
- AND MANY MORE





# INTERNATIONAL IMPACT



ALB-Architect  
Headquarters  
KOSOVO

KfW

World  
Bank

Millennium  
Foundation

UNOPS

USAID  
AED

GIZ

KFOR

LUX  
Development

Sowi L.L.C

EULEX

# OUR PROCESS

**Pre-Design** Location Studies | Site & Utilization Studies | Operational Organization & Sequence studies | Area Allocation & Function Programs | Regional Development Dossiers | Feasibility Studies | Consultancy | Preliminary Design | Economic analyses | Optimization Models | Schedule Planning | Competitions for Realization

**Expert Reports** Land-use Plan | Local Development Plans | Operational Analysis & Planning | Construction System Plans | Installation Planning | Planning Approval Dossiers | Water Management Studies | Noise, Vibration & Emission Protection Studies | Room & Building Acoustic Studies | Construction Physics Studies

**Project Planning** Basic Evaluation | Concept Design, Preliminary Planning | Design | Building Permit Procedures | Static Calculations | Construction Plans and Calculations | Implementation Planning, Execution Planning | Quantity & Cost Computations | Construction Sequence Planning | Schedule & Cost Monitoring | Tendering & Award | Checking

**Execution & Management** Project Management | Management Program | Financing Planning | Technical & Commercial Management | Site Supervision | Schedule Supervision | Cost Supervision | Cost Finding | Quality Supervision | Personnel Training | FIDIC Contract Management | Acceptance of Works Commissioning | Guarantee Monitoring | Health & Safety Coordination | Client's Representative



# OUR VALUES

The design process is not linear, meaning that we repeat the steps as many times as needed, making improvements along the way as we learn from each other and uncover new design and engineering possibilities to arrive at great solutions.



- **Client-Centered Approach** - Our objective is to seek long-term relationships with selected clients and partners by gaining their support through high quality performance. We aim to achieve greatness and offer high standards to those who put their trust on us

- **Multi-disciplined Fellowship** - We constantly strive to evolve together as a team and empathize our diverse professional qualities, in order to combine our knowledge for innovative solutions.

- **Gender Mainstreaming outlook** - We are convinced by our own experience that gender mainstreaming is a long term strategy that can only serve beneficially for a great project implementation, offering efficient approaches to up to date resolutions.

- **Financial stability** - We have learned to survive and adapt to extreme conditions by being extremely measured in accepting undertakings and choosing carefully and deliberately on how we implement our solutions into the real world.

- **Environmental & Social Responsibility** - The socio-environmental dimension has become a structural and strategic element, where we address it through the concept of Corporate Social Responsibility in order to rise our company's project quality and set an example for our upcoming generations.

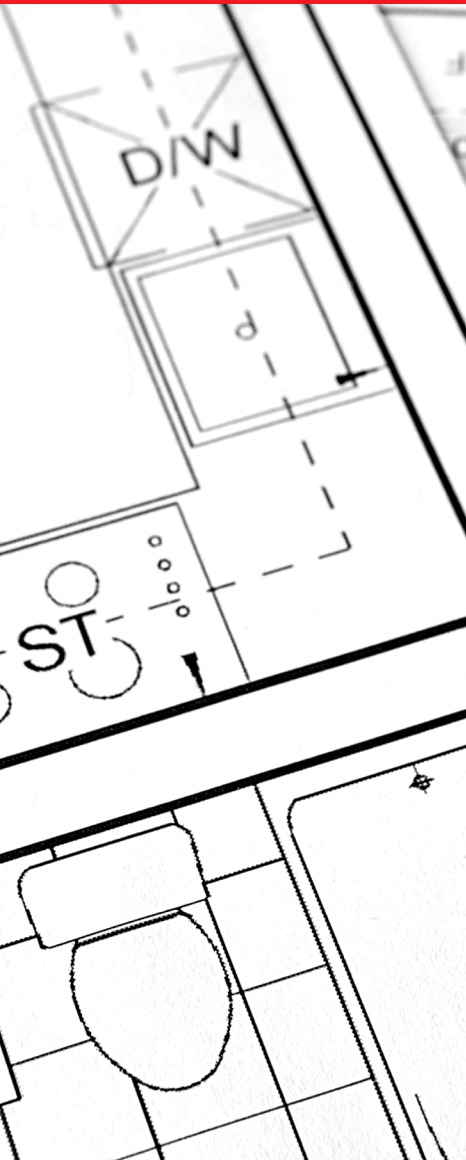
# OUR SERVICES

Our team designs for execution which includes the complete implementing bases for the complex, the structural alignment of the buildings in the location, specifics of foreseen materials, foretasted financial cost, method statement, architectural structure in the location as well as specifications of the buildings in particular by providing the complete detail documentation for the execution of the project.

One of the ways we distinguish ourselves is through our proven ability to assemble and coordinate teams of our experts. We have developed in our team best engineers, electricians, architects and other skilled experts. **ALB Architect** works efficient, and high-caliber work regardless of whether your project is large or small in scope, we plan ahead, anticipating and addressing potential problems, our experience with a wide range of projects helps us tackle challenges and produce results that give you a strong return on investment.

We are engaged at our country with different experts specialized in the spheres of design construction, planning and technology, based on our many years of experience.





We offers individual and general services embracing the following:

### **BUILDINGS & ARCHITECTURE**

- EDUCATION & SCIENCE
- OFFICE & ADMINISTRATION
- URBAN PLANNING
- HIGH SECURITY BUILDINGS
- HOUSING CONSTRUCTION
- REDESIGN & RECONSTRUCTION
- CONSERVATION, RESTORATION & MEMORIALS
- PROJECT MANAGEMENT
- HEALTHCARE
- MEDICAL & LABORATORY TECHNOLOGY
- INTERIOR DESIGN
- SPORT
- MEP

### **ENVIRONMENT & ENERGY**

- ENERGY EFFICIENCY
- RENEWABLES
- RIVER BASIN DEVELOPMENT
- DAMS AND ARTIFICIAL LAKES
- WTP & WATER SUPPLY NETWORK
- WWTP & SEWAGE NETWORK

### **TRANSPORT**



# BUILDINGS & ARCHITECTURE

The design for execution includes the complete implementing bases for the complex, the structural alignment of the buildings in the location, specifics of foreseen materials, foretasted financial cost, method statement, architectural structure in the location as well as specifications of the buildings in particular by providing the complete detail documentation for the execution of the project.

## Urban Planning

ALB-Architect incorporates practical sustainable design strategies and practices into our projects that benefit our communities. Our experts combine low-impact engineering design principles with aesthetically pleasing landscape and civil/site designs to produce cost-effective sustainable solutions for your project.


## Education and Science

Designing for the future leaders and scientists is a task we managed to accomplish successfully from the beginning, starting from primary (middle) schools till university facilities, including dorms, deaneries and rectorates.

## Office and Administration

From the general offices to the most complex administrative buildings, we as ALB-Architect focused on providing the best functional solution and giving each building its own character.





## High Security Buildings

For these projects, we mainly address long-time solutions and specific requirements, as well as efficiency in time and management to offer security and confidential services.



## Housing Construction

The housing facilities such as individual residential houses and community housing, require comfort and criteria which fit the client the best. Besides the building itself, it's important to follow urban regulations.



## Redesign & Reconstruction

Alb-Architect is familiar with design and execution of the new interventions on existing buildings is very common and an important task, since it needs to be harmonized with the existing facility.

## Industry and Trade

Our innovative approach regarding architecture and design from a classical industrial perspective to a modern style which empathizes the overall concept, providing sustainability and long lasting results

## Conservation , Restoration & Memorials

We value the protection and care of tangible cultural heritage of the buildings as well as what there buildings represent.

## Project Management

We direct and coordinate human and material resources throughout the life of the project by using modern management techniques to achieve predetermined objectives of scope, cost, time, quality, and participating objectives".

**ALB-ARCHITECT**

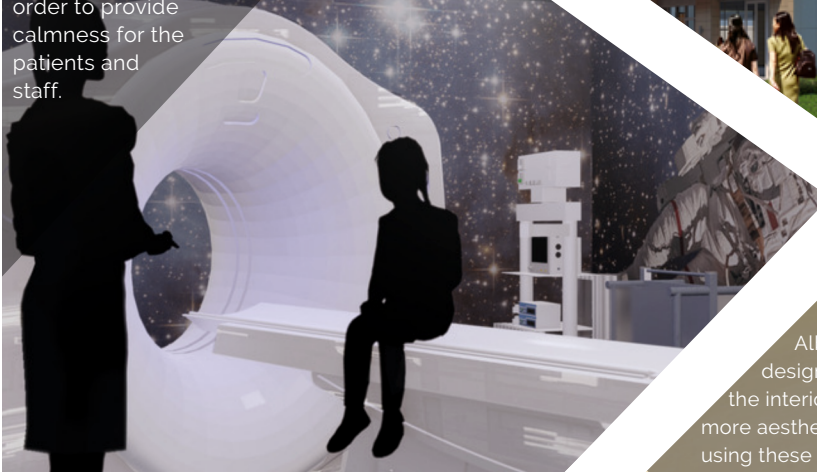


## Healthcare

We support the efforts of medical facilities to evolve and update their methods and approach in order to adapt to the latest requirements. We want to help maximize efficiency, reduce error rates, and protect the safety and well-being of patients and staff, in order to provide flexible solutions.

## Medical & Laboratory Technology

Specific requirements are taken into account as well as the overall design adjustment in order to provide calmness for the patients and staff.



## Interior Design

Alb- Architect views Interior design is the art and science of enhancing the interior of a building to achieve a healthier and more aesthetically pleasing environment for the people using these spaces.

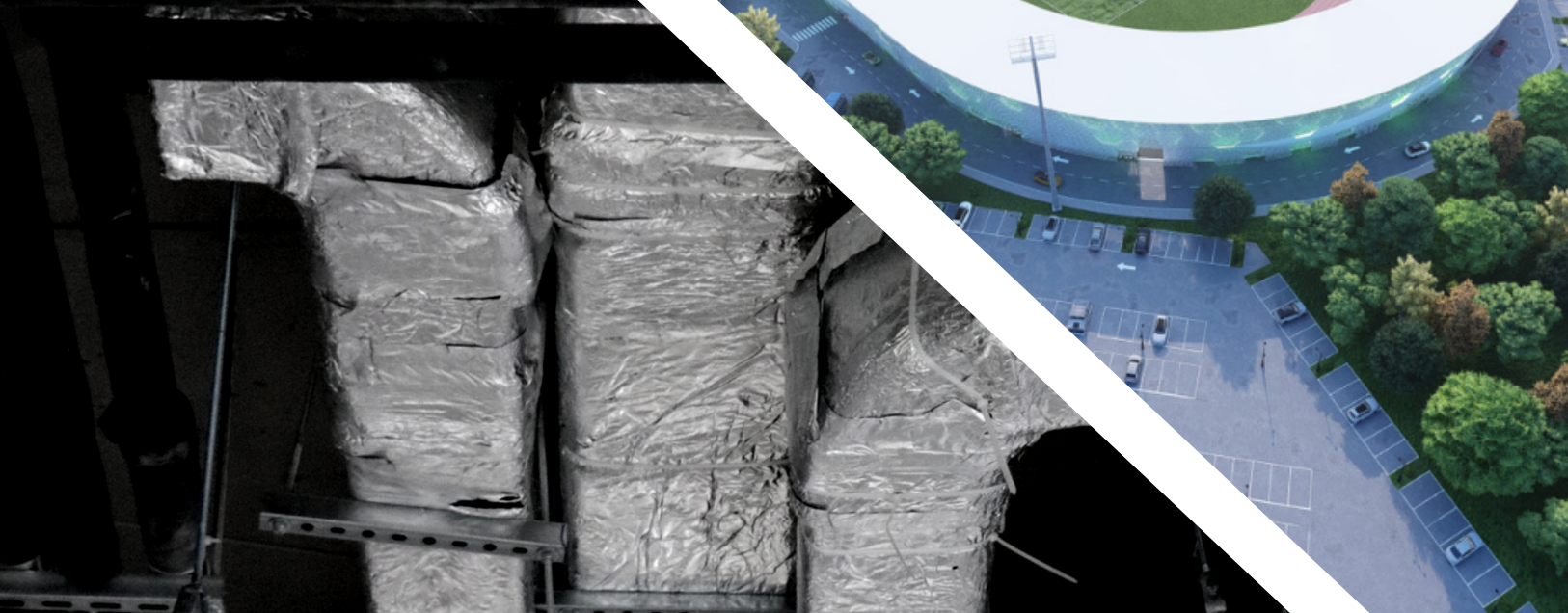


## MEP

The MEP scope include the full complex engineering process, together with equipment and materials used to provide functional facilities. These works include the whole engineering function, supply, installation, testing & commissioning, coordination and obtaining approval from relevant local authorities.

## Sport

Our expertise is to serve our customers with the design and installation of the highest quality in field of sports. We manage the sports facilities and recreational buildings to meet the needs of whatever activity takes place in the facility.



## River Basin Development

We design river basins by respecting the technical norms and environmental laws, implementing the latest technological solutions and choosing materials that provide long-lasting and efficient usage.

## Energy Efficiency

By enhancing efficient energy and reducing it with various modern methods, in each building we work with, we aim to lower the costs on a project without changing the quality within a economy-wide level.

# ENVIRONMENT & ENERGY

ALB-Architect provides a wide range of environmental management services to support clients in various industries. Our experts knowledge grounded in scientific analysis to identify best practices which add value to your projects and reduce risk.

Our team includes specialists who are board certified, licensed and highly qualified to meet the complex and evolving needs of clients, whether large or small.

## Renewables

Our expertise includes a variety of services with government and industrial clients to resolve contemporary environmental issues, as well as find innovative ways to produce energy without negatively impacting the surrounding.



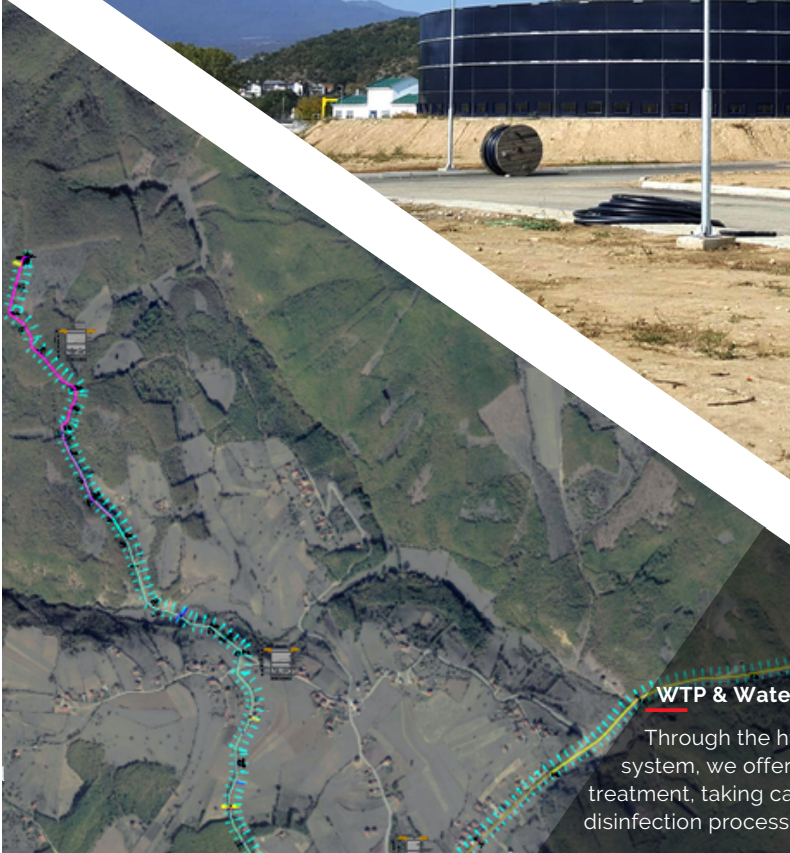
### WWPT & Sewage Network

We provide water waste disposal for industrial and domestic water, based on the latest standards and norms. Besides providing the removal of sewage, we also offer their treatment.



### Dams and Artificial Lakes

Our experts develop multiple solutions on controlling the water flow, designing artificial lakes and dams in order to provide water for various activities as: consumption, irrigation, industrial uses, producing electricity and improving the overall impact in nature.



### WTP & Water Supply Network

Through the hydrological and plumbing system, we offer water supply networks and treatment, taking care of the cleaning, filtration and disinfection process for environmental improvement.



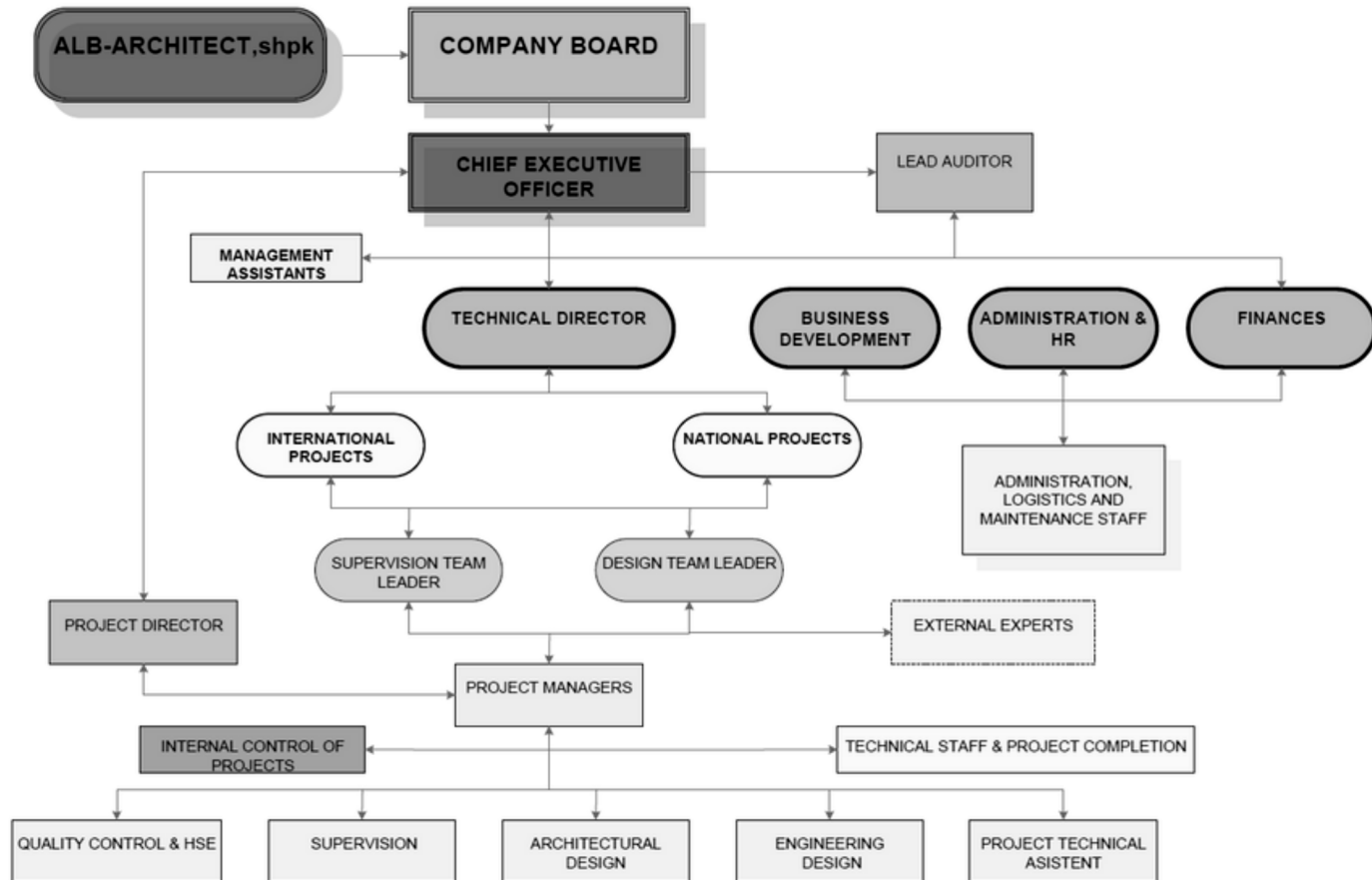
# TRANSPORT

Construction of roads involves the paving, rehabilitation, and pavements in order to achieve a state of good repair and increase road traffic safety. Our expertise is to serve our customers planning, evaluation, geometric and pavement design, documentation, contract administration, and consortium monitoring for parking areas, development sites, minor and major roads, road rehabilitation etc.

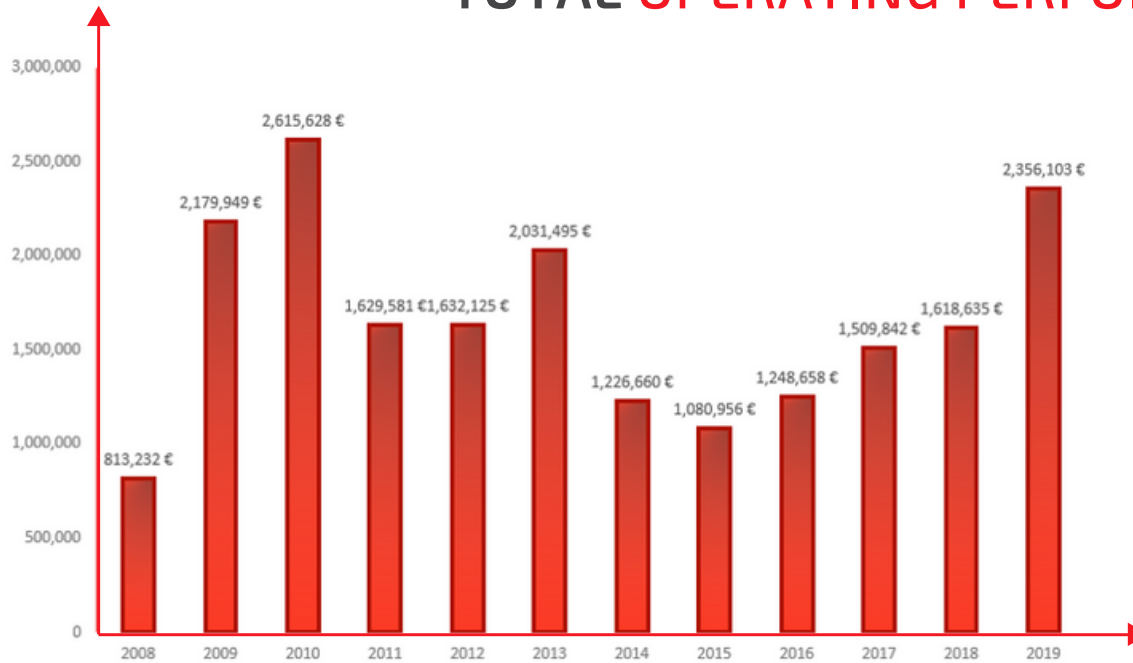
Our aim is to provide cost effective, innovative and professional services to Clients, together with our team we have built reputation on providing high-quality results in an efficient manner.

By combining our experience, we can assure safety and easy access for both, any type of vehicle and pedestrians.

# COMPANY ORGANOGRAM



# TOTAL OPERATING PERFORMANCE



**Alb Architect** applies a quality management system that is certified in compliance with ISO 9001:2015. In addition, we are certified in accordance with ISO 14001:2015 (Environmental Management) and OSHAS 18001:2007 (Health and Safety Management). With this quality, occupational health & safety and environmental (QSHE) certification, Alb Architect will continue to improve the quality of operations and processes while at the same time ensuring environmental sustainability and maintaining occupational health & safety standards



ISO 9001-Quality Management System



ISO 14001-Environmental Management System



Occupational Health and Safety Management System

# CONTACT

**Address:** Str.Isa Kastrati Nr.1, 10 000 Prishtinë, Kosovë,

**Telephone:** +383 38 220 973

**E-mail:** [info@albarchitect.com](mailto:info@albarchitect.com)

**Website:** [www.albarchitect.com](http://www.albarchitect.com)



<https://www.linkedin.com/company/albarchitect>



<https://www.facebook.com/albarchitect>



[@albarchitect](https://www.instagram.com/albarchitect)